

Vaisala AviMet® Data Panel Display WID512



Features/Benefits

- Generic data panel display for aviation purposes
- Easy-to-use touch screen with intuitive Graphical User Interface
- High contrast day-time and night-time color schemes with display brightness control
- Coherent look and feel with Vaisala AviMet® systems
- Desktop, panel, and wall mounting options
- Short installation times and virtually maintenance free
- Visual and audible alarms
- Wide operating temperature range, as low as -20°C (-4°F)
- Robust electrical and mechanical design

For Use in Aviation Applications

The Vaisala AviMet® Data Panel Display WID512 is designed for viewing important information in aviation applications in a simple way. The display uses a compact 5.7" LCD screen suitable for aviation-related operating environments such as air traffic control towers, where excellent readability in both bright and dim light is required. The WID512 is controlled using an easy-to-use resistive

touch screen, with a clear, uncluttered user interface for simple operation.

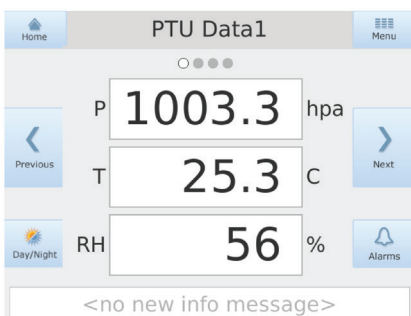
Robust Display with High Performance

The WID512 is robust, designed and tested for demanding industrial electromagnetic and environmental specifications. It is equipped with a resistive touch screen that can be controlled with either bare or gloved hands, or any other suitable object. The WID512 supports up to 16 pages of information. Data shown on the WID512 display is controlled by the host computer with a message format defining the content of each displayed page. The WID512 can be used for different data viewing purposes, most commonly it is used as a back-up display for the AWOS system main user displays. The WID512 is connected to the data sending unit, like the AWOS, via Ethernet or RS-485 connection.

Integrated Touch Screen for Efficient Operations

The WID512 has a full-size intuitive touch screen with a graphical user interface for easy navigation between separate data pages – as well as simple display setting changes with straightforward item selection. Each data page contains three data rows with three columns. Typically one data label, one value and one unit are shown on each row. There are visual and audible alarms in all views to warn of serious events like message or system failures. A PIN code is required to access the maintenance mode advanced settings in order to prevent unauthorized changes to the display settings.

The WID512 can be mounted in different ways depending on where it is installed. It can be easily mounted on a standard IEC panel, desktop or wall.



Technical Data

Operating Environment

| | |
|-------------------------------|--|
| Temperature range, operating | -20 ... +60 °C (-4 ... +140 °F) |
| Temperature range, storage | -30 ... +80 °C (-22 ... +176 °F) |
| Humidity range, operating | 2 ... 95 %RH, non-condensing |
| Vibration compatibility | MIL-STD-810G 514.6C-3 Procedure I, Cargo Vibration Test |
| Electromagnetic compatibility | IEC/EN 61326-1 Industrial Environment CISPR 22, Class B (EN 55022) CISPR 24 (EN 55024) |

Inputs and Outputs

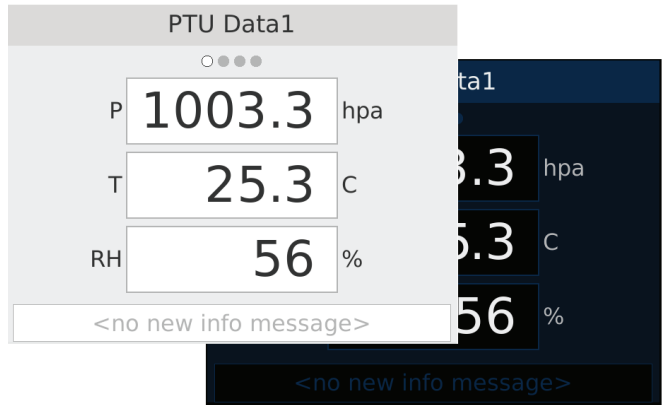
| | |
|--|------------------------------------|
| Supply voltage | 12 ... 28 VDC |
| Maximum power consumption at +20 °C (+68 °F) | 15 W |
| Typical power consumption at +20 °C (+68 °F) | 4 W |
| Data interfaces | Ethernet (10/100 MBit/s) RS-485 |

User Interface

| | |
|----------------------|--|
| Display element | 5.7" TFT LCD 640x480 VGA resolution >500 cd/m ² luminance |
| Brightness control | Manual |
| User input interface | Touch screen, resistive |
| Audible alarm | > 80 dB(A) at 1 meters, 2 kHz |
| Observation mode | Up to 16 data pages with a header text box and 9 alphanumeric text boxes |
| Navigation mode | Switch between data pages Alarm log Day-time and night-time views |
| Maintenance mode | Access to maintenance mode Display cleaning (wipe) mode Touch screen calibration Volume setting Brightness setting Product information view Advanced settings (PIN login) Configuration settings Configuration file import/export Software update |

Mechanics

| | |
|---|---|
| Housing material | PC/ABS |
| Ingress protection class | IP20 (with panel mounting) |
| Flammability class | UL94 V-0 |
| Mounting options | panel, desktop, wall |
| Panel installation standard compatibility | IEC 61554 |
| Panel mounting aperture dimensions | 138 mm x 138 mm |
| Panel mounting frame dimensions | 144 mm x 144 mm |
| Drop test compatibility | MIL-STD-810G 516.6 Procedure IV, Free Fall (Rough Handling) |
| Directive compliance | EMC, LV, WEEE, ROHS |



WID512 day-time and night-time color schemes



Please contact us at
www.vaisala.com/requestinfo



Scan the code for more information

Ref. B211318EN-B ©Vaisala 2014
 This material is subject to copyright protection, with all copyrights retained by Vaisala and its individual partners. All rights reserved. Any logos and/or product names are trademarks of Vaisala or its individual partners. The reproduction, transfer, distribution or storage of information contained in this brochure in any form without the prior written consent of Vaisala is strictly prohibited. All specifications — technical included — are subject to change without notice.

www.vaisala.com

