

# CWR7200 Radar Level Meter

## 1. Features

- 1.1 CWR7200 use 26GHz transmitting frequency which have the features of high frequency radar level meter as below:
  - Small beam angle, more powerful antijamming capability and higher accuracy.
  - Small Antenna, easy to install dust cover and protection.
  - Lighter weight, easy to install.
  - Max measurement range is 70m
  - Communication Interface: 4-20mA(HART) or RS485(Modbus)
- 1.2 Microwave pulse measurement principle, improve the signal's resolution and sensitivity.
- 1.3 Power supply is 6 - 36V.
- 1.4 The product has SPD(surge protective device), suitable for filed application.

## 2. Product Introduction

### CWR7200

**Application: Hydrological Monitoring**



**Measurement range: 35m**

**Accuracy: -/+3mm**

**Resolution: 1mm**

**Beam angle of antenna: 12°**

**Measuring time: 20s**

**Frequency: 26GHz**

**Output: 4-20mA (HART) or RS485(Modbus)**

**Power supply: DC18-36V(4-20mA) or DC6-28V(RS485)**

**Standard protection: IP67**

**Temperature: -40°C ... +100°C**

**Relative humidity: 0 ... 100%**

**Shell: Aluminum material**

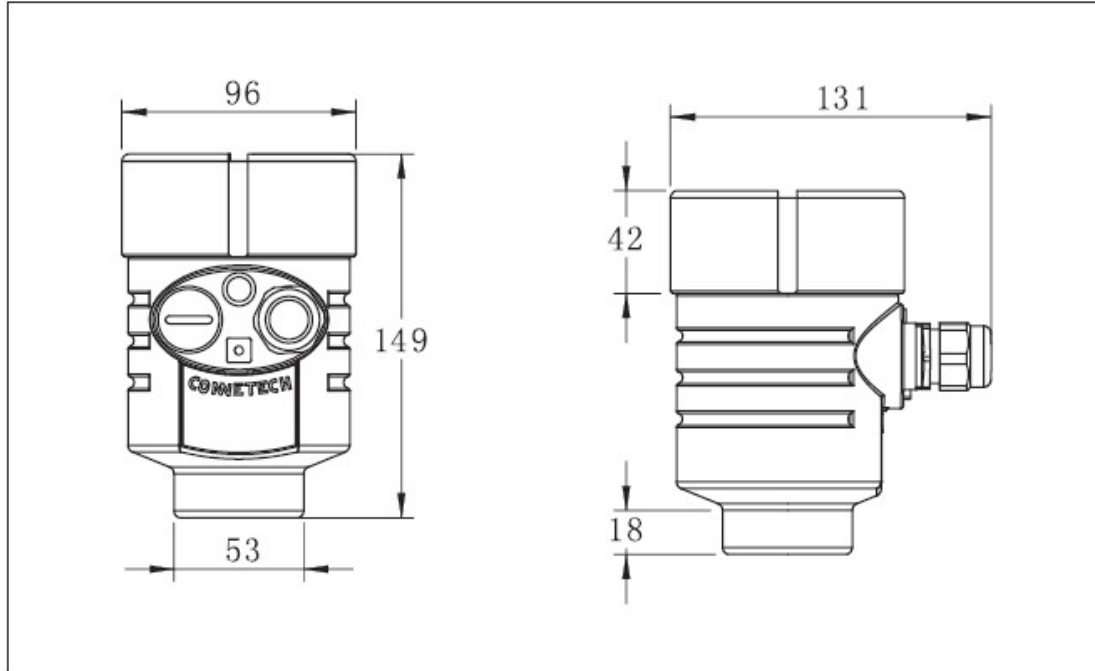
**Process connection: PP**

**Installation: End face connection PP flange or gantry**

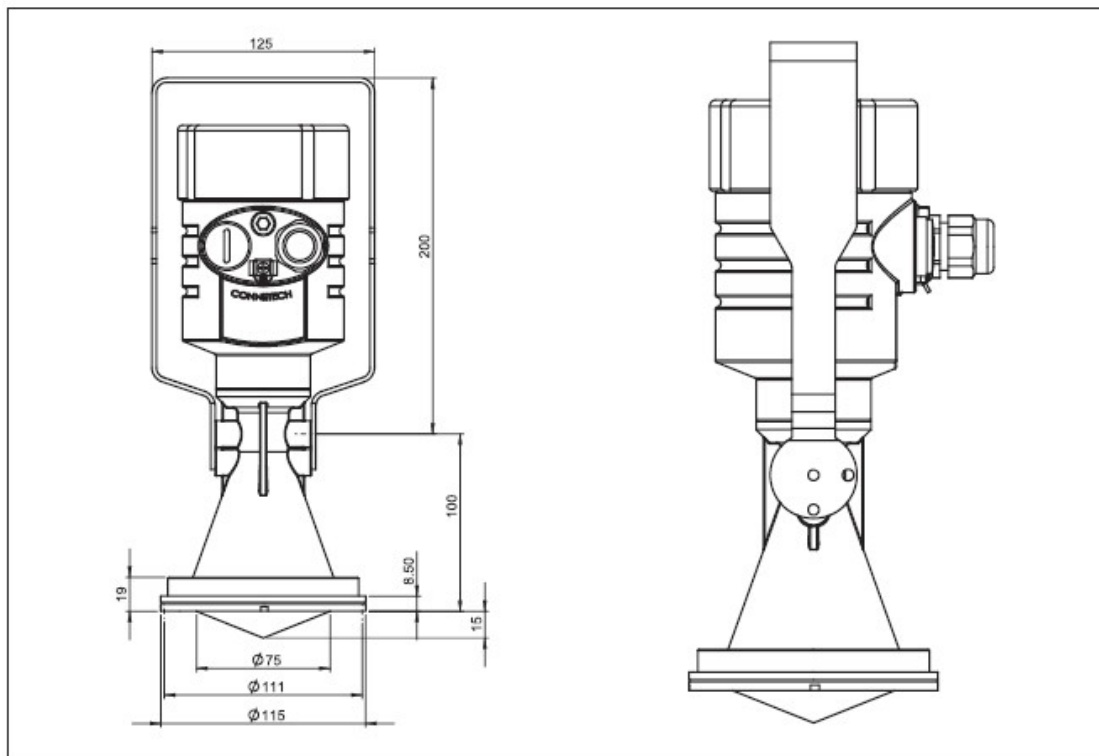
**Antenna: PP + PBT**

### 3. Product Size

#### 3.1 Shell Size



#### 3.2 Overall Size



## 4. CWR7200 Model Selection

### License

- A. Simple Type (5m)
- B. Ordinary Type (15m)
- C. Standard Type (35m)

### Antenna Type / Material/ Process Temperature

- F. Plastic Horn Antenna  $\Phi 78\text{mm}$  / PBT
- T. Special Tailor-Made

### Process Connection

- TI. End Face Connection Flange
- TG. Gantry
- TT. Special Tailor-Made

### Process Seal / Temperature

- A. VITON Fluororubber / -60 - 150°C

### Electronic Unit

- R. 6-28VDC / RS485 / Modbus Agreement
- S. 18-36VDC / Two-wire 4-20mA / HART Agreement

### Installation Accessories / Material

- X. No Accessories and Material
- F. Gantry
- G. End Face Connection Flange DN80 / PP
- H. End Face Connection Flange DN100 / PP
- I. Special Tailor-Made

### Shell / Protection Grade

- A. Aluminum / IP66 / IP67

### Cable Line

- M.  $M20 \times 1.5$
- N. 1/2NPT

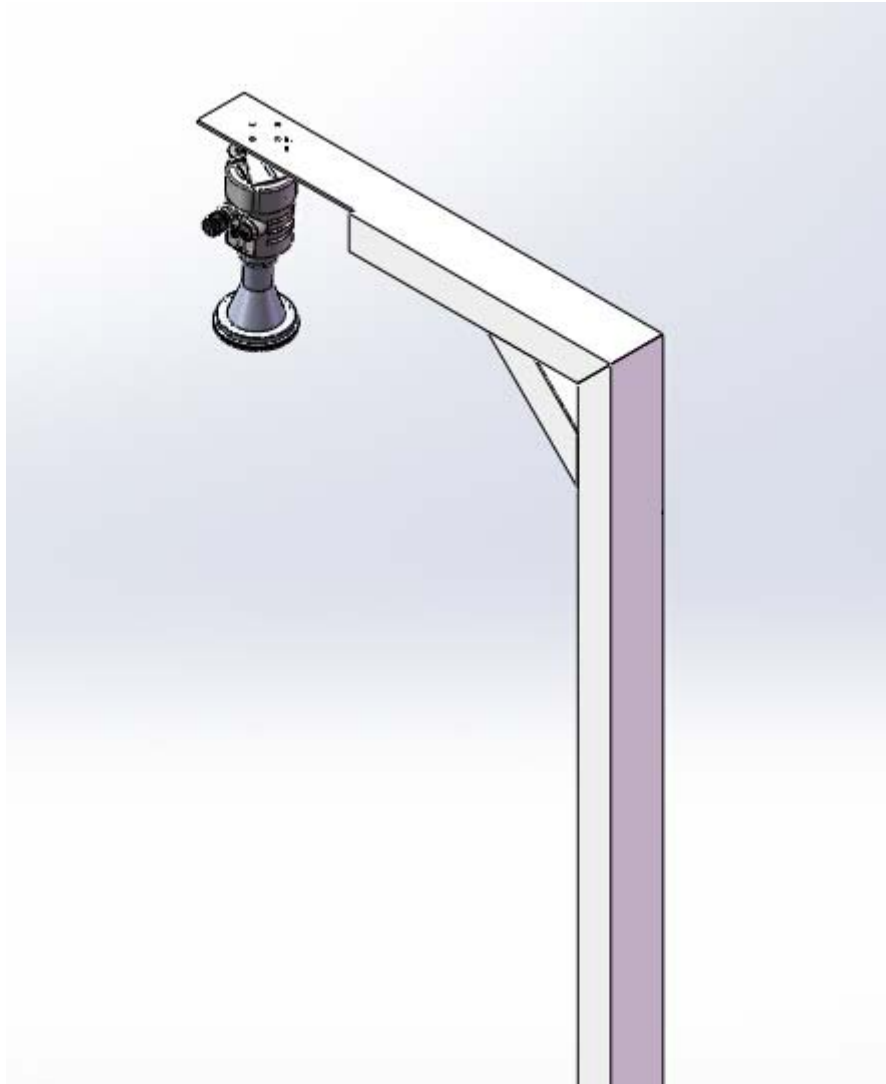
### LCD Diaplay

- X. Without
- Y. With

**Manufacturer: Connetech Electronics Technology Co.,Ltd**

**Address: 6306, The 3rd floor, N° 6 Building, N° 17 Yunshannanlu Road, Tongzhou Industry Park, Tongzhou District, Beijing, P.R.C.**

# 1. Installation Drawing

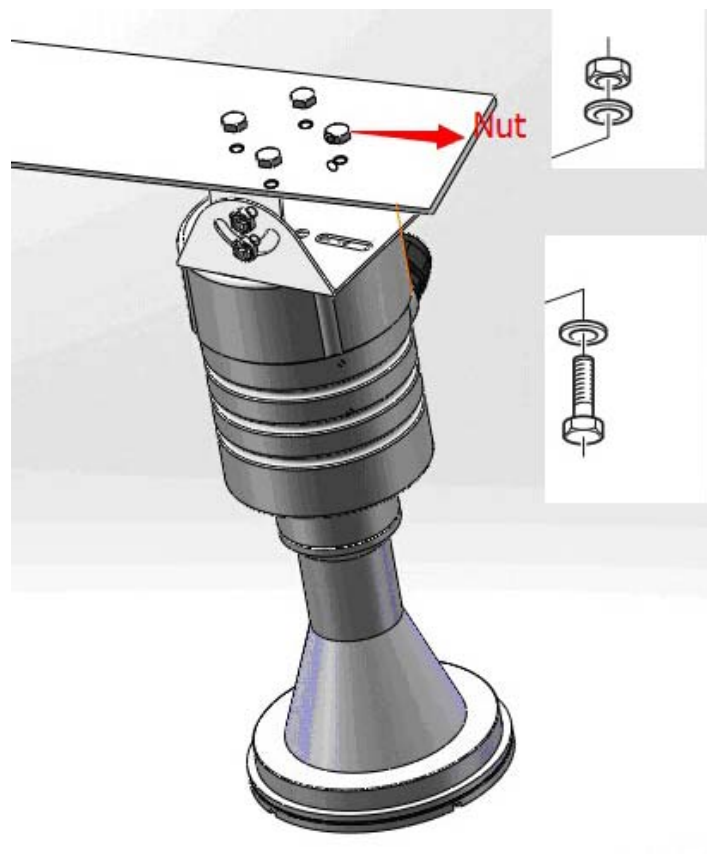
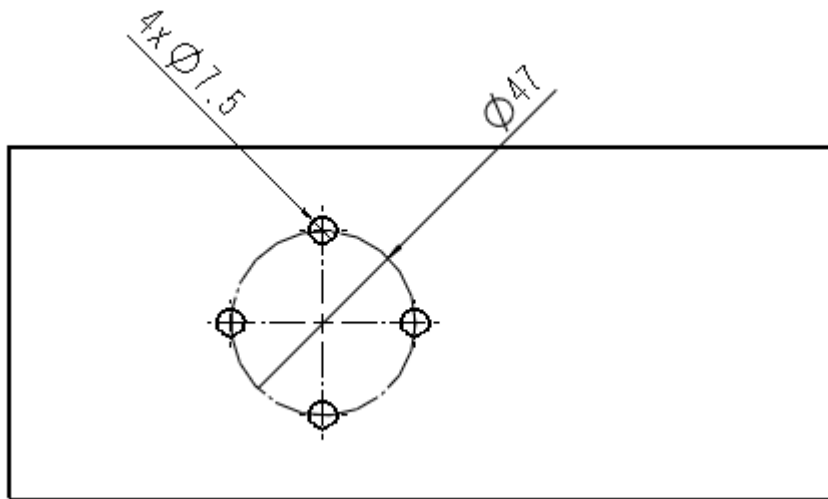


## 2. How to drill the holes on the steel plate?

Please drill the holes according the following drawing. **All dimensions in mm.**

And the screws and nuts are bought according to the thickness of the steel plate which is used by the customer.

The screws and nuts (size is M6) need to be made by Stainless steel.



### 3. How to adjust the angle in the horizontal direction?

Since the design on the top is round, we could use this to adjust the angle in the horizontal direction.



### 4. How to adjust the angle in the vertical direction?

By adjusting the red screw in the following map, we could use this to adjust the angle in the vertical direction.

